



AASHIRWAD

Project By:

॥स्वयमेव मूर्गेद्रता॥

MALPURE
GROUP

A Visionary Commercial Space That Sets *New Standards.*

At Malpure Group, we understand that your commercial property investment is more than just a purchase – it's an opportunity to build wealth and secure your financial future. We know that today's business owners demand more than just four walls and a roof. That's why this commercial property is equipped with top-of-the-line amenities designed to enhance productivity, comfort, and convenience. From high-speed internet to cutting-edge security systems, we've thought of everything to make your investment a success.

Malpure Group is committed to providing personalized service to each of their clients. We take the time to understand our clients' unique needs and work closely with them to find the perfect property. Our approach is tailored to each client, ensuring that they receive the best possible service.



Project Highlights



Seamless Connectivity



Prime Location



Large Flexible Floor Plans



Premium Office Spaces



Luxurious Showrooms



Attractive & Immense Shops



Top-of-the-line Infrastructure



Convenient Parking Space



Solar Powered Common Area



Lift with Battery Backup

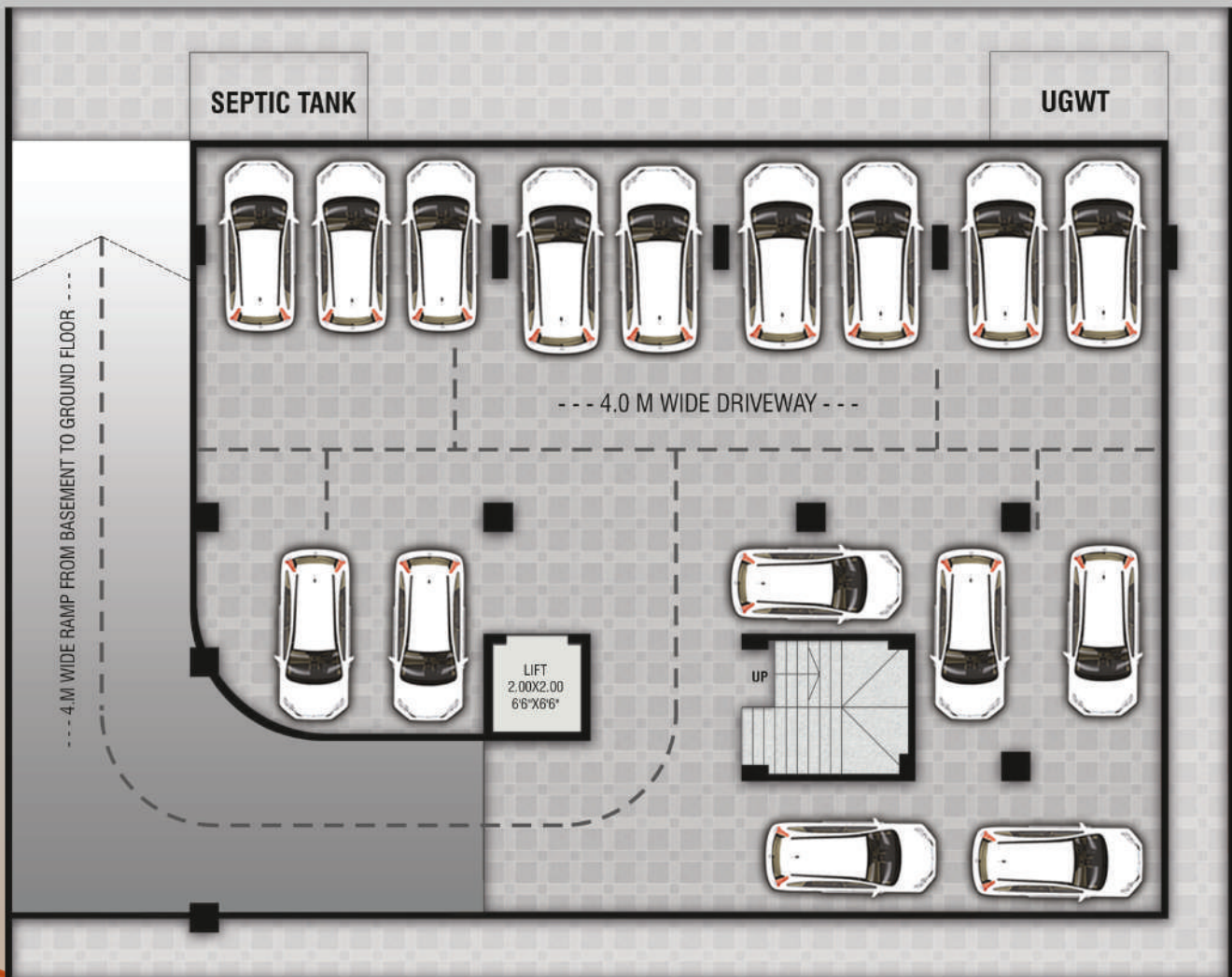
And much more that ensures your Success & Profitability.

Project Amenities

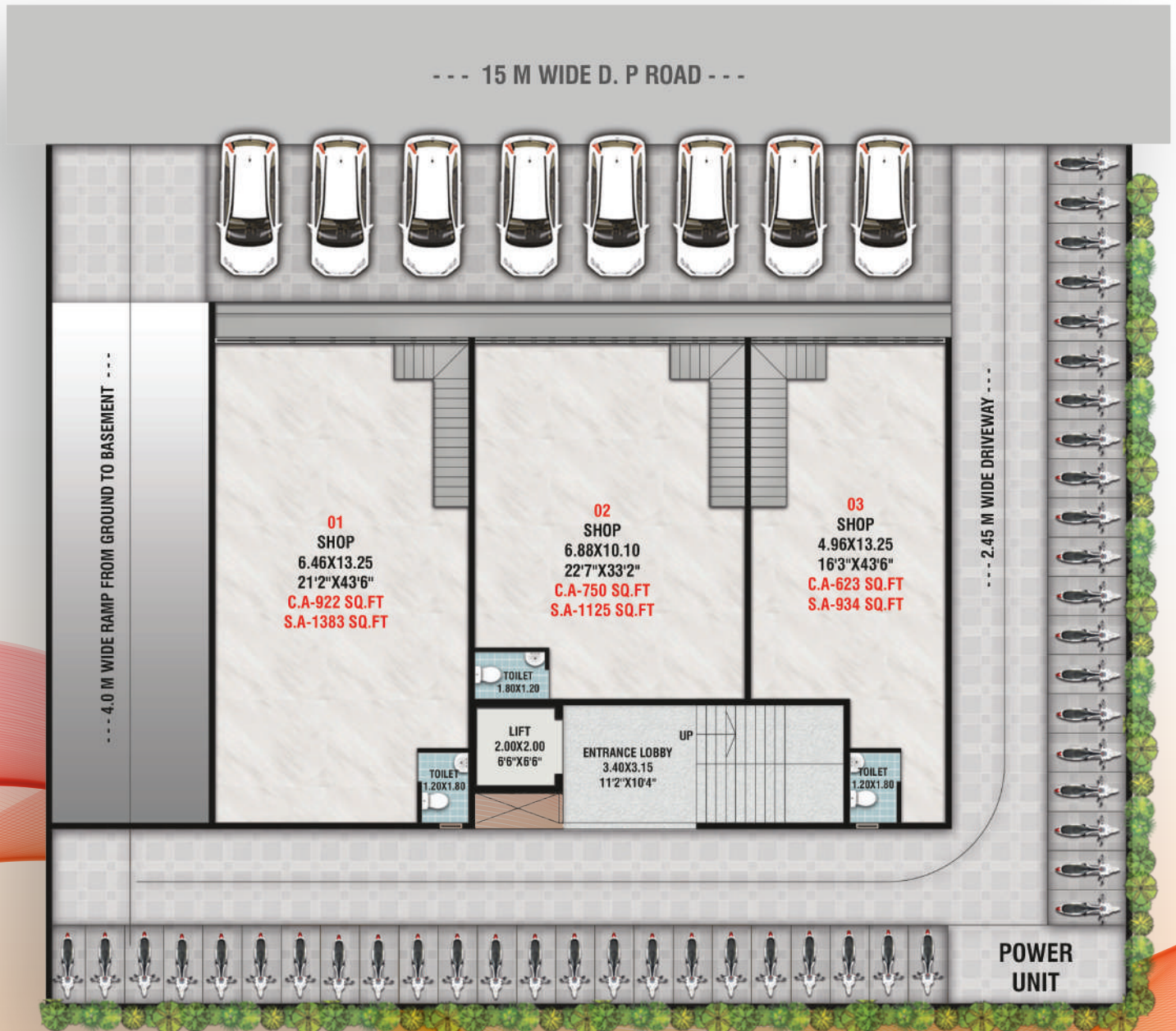
- Modern Features
- Progressive Business Community
- Central & Convenient Location (College Road)
- Vastu Compliant
- Deluxe Class Construction
- 24/7 Security Camera
- High Returns on Investing in Commercial Property
- Outdoor Seating Areas or Rooftop Terraces
- On-site Management and Maintenance Teams
- Premium Electrical Switches and Points
- Firefighting System
- Wide Stairways / Passage
- LED Lighting
- Adequate Power Supply
- Ample Parking

BASEMENT *Floor Plan*

--- 15 M WIDE D. P. ROAD ---



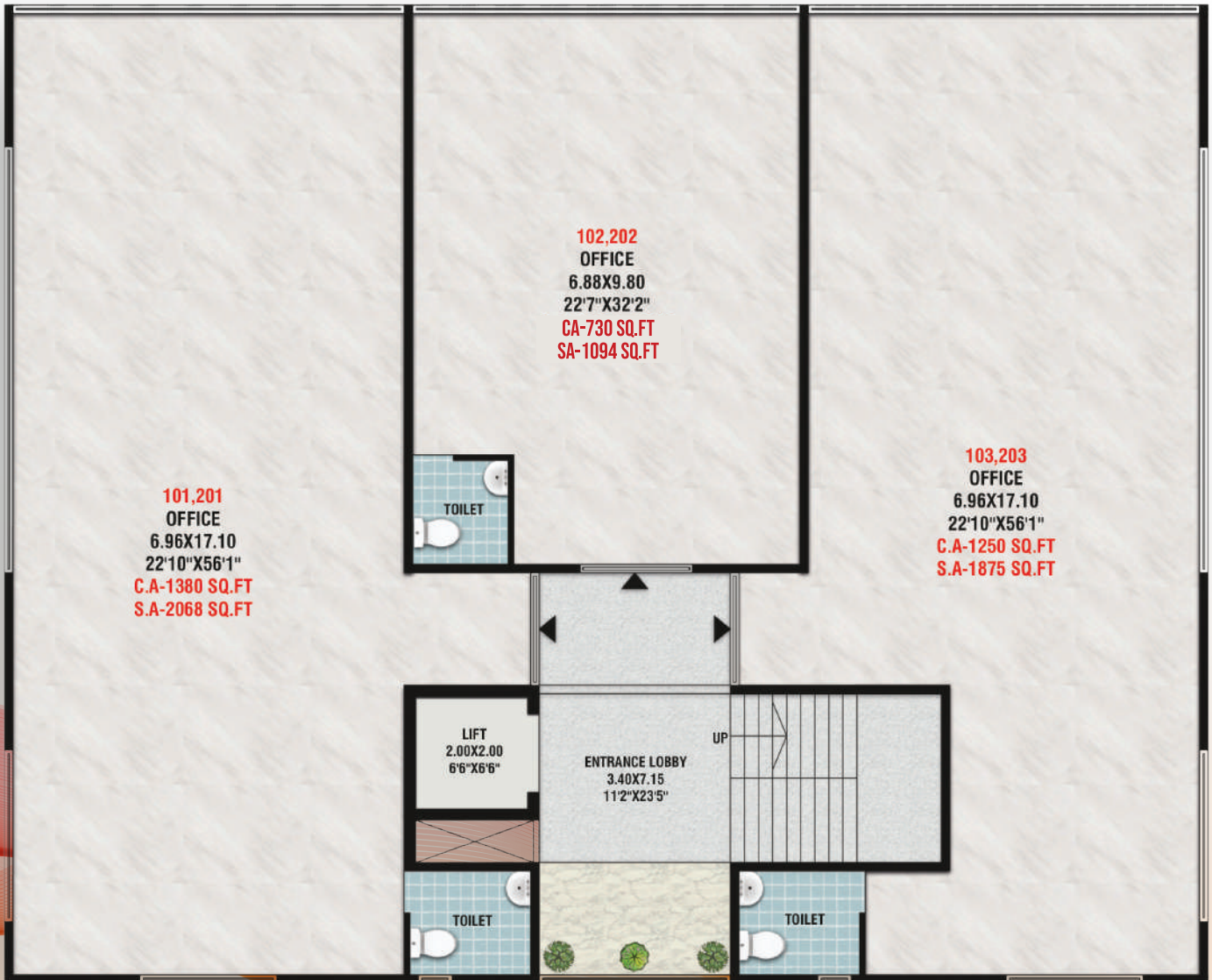
GROUND Floor Plan



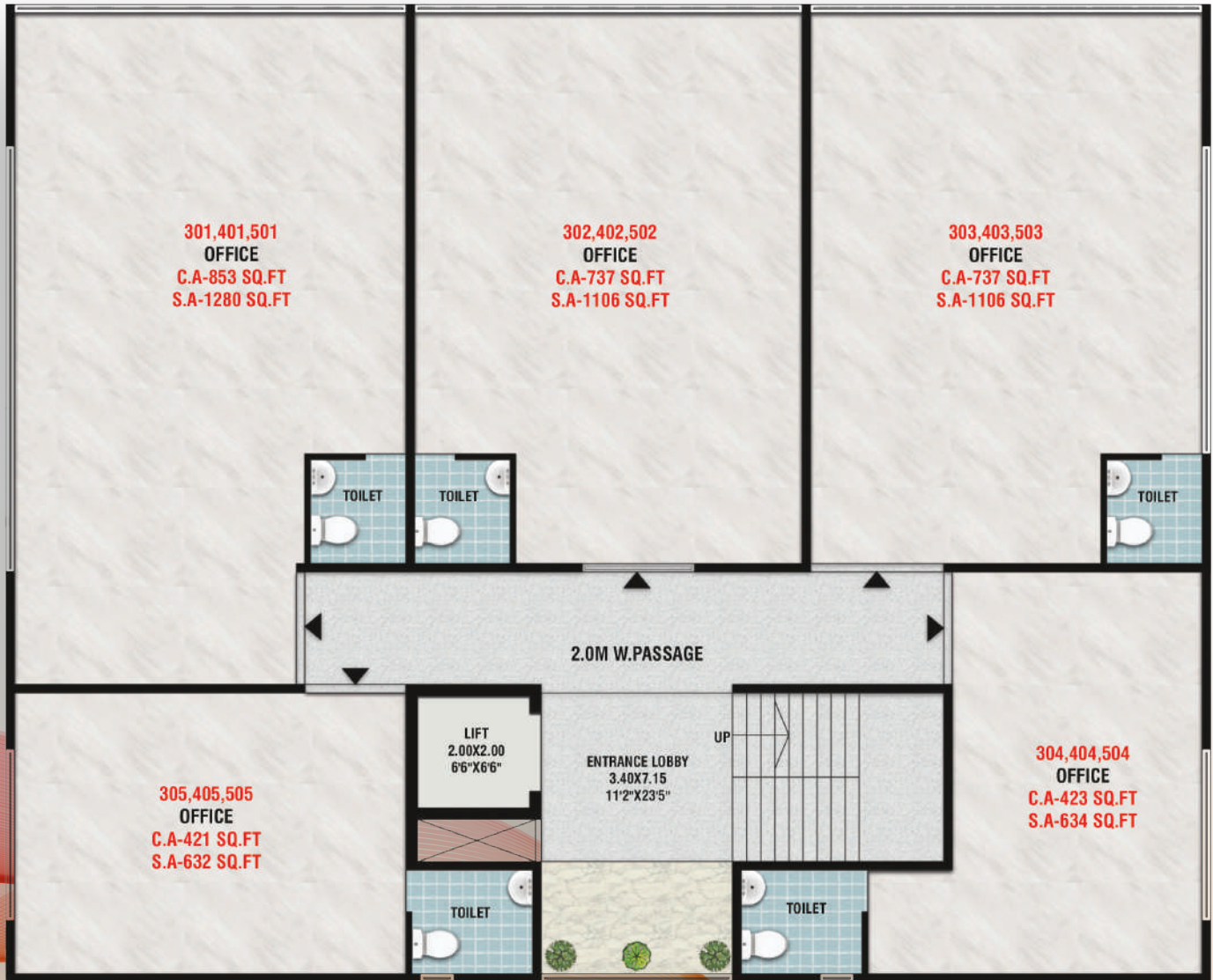
MEZZANINE *Floor Plan*



1ST & 2ND Floor Plan



3RD, 4TH & 5TH Floor Plan





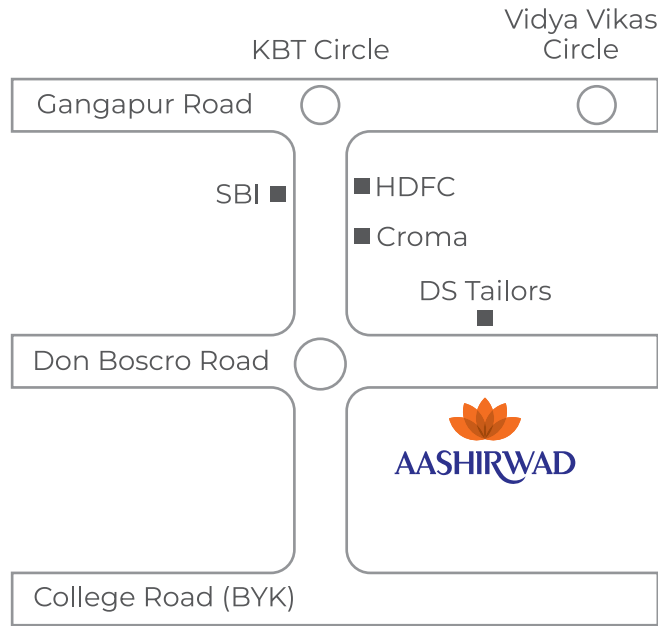
AASHIRWAD
MALPURA GROUP

Puma

Zaara

Polinola

AASHIRWAD
MALPURA GROUP



Project By:

॥स्वयमेव मूर्धेद्वता॥
MALPURE
 GROUP

Architect : Ar. Shruti Abhishek Malpure

Structural Consultant : Aakar Consultants

Legal Advisor : Ad. Vidyulata Tated

☎ **9403117110 / 7277397777**

📍 Aashirwad, Opp. to DS Tailors, Near Croma Showroom,
 Thatte Nagar, College Road, Nashik - 422005.

🌐 www.malpuregroup.com

FOLLOW US



Disclaimer : Malpure Group retains the right to change the layout, plan, specifications, and other things without being obligated to anyone or giving them prior notice. The information, specifications, and other details are hypothetical, representative of the type of development that each developer intends to create, and solely represent the impression of an artist.

This Brochure is only for information purpose.
 Should not be interpreted as an offer to sell.